

PRAGMA
INNOVATIONS

ARVIGOnano 3



Quick Start Guide BSS®

1 Setup ARVIGOnano

1.1 Software Overview

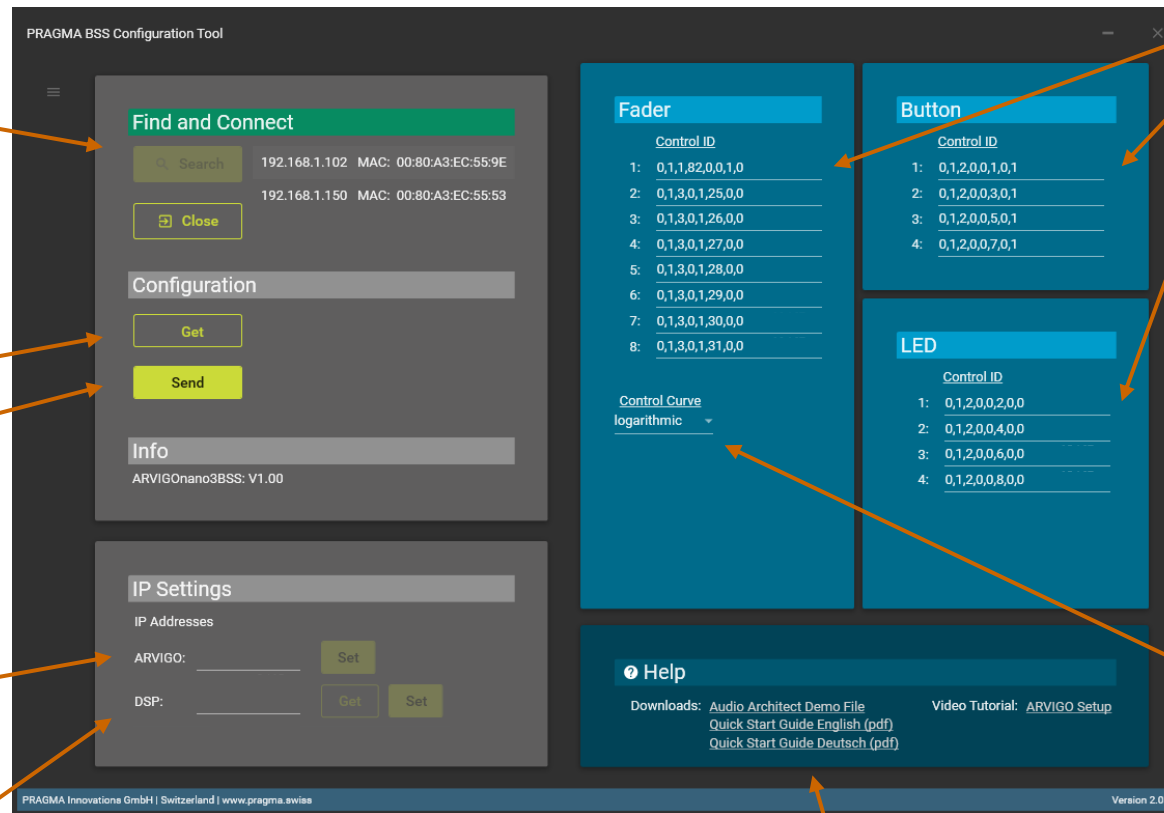
Find ARVIGOnano in network,
connect, identify and disconnect.

Retrieve ARVIGOnano settings.

Send settings to ARVIGOnano.

Define ARVIGO IP Address
(Default: DHCP)

Define DSP IP Address.



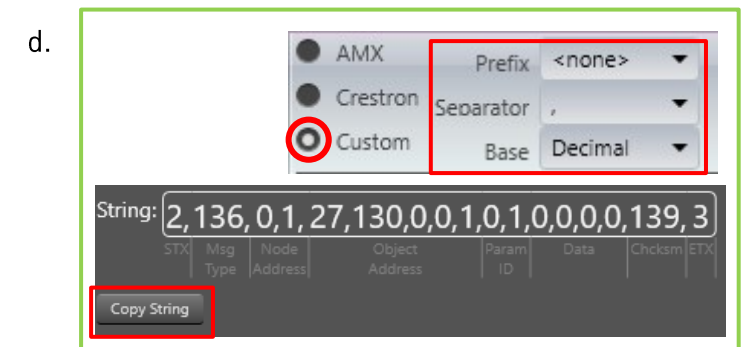
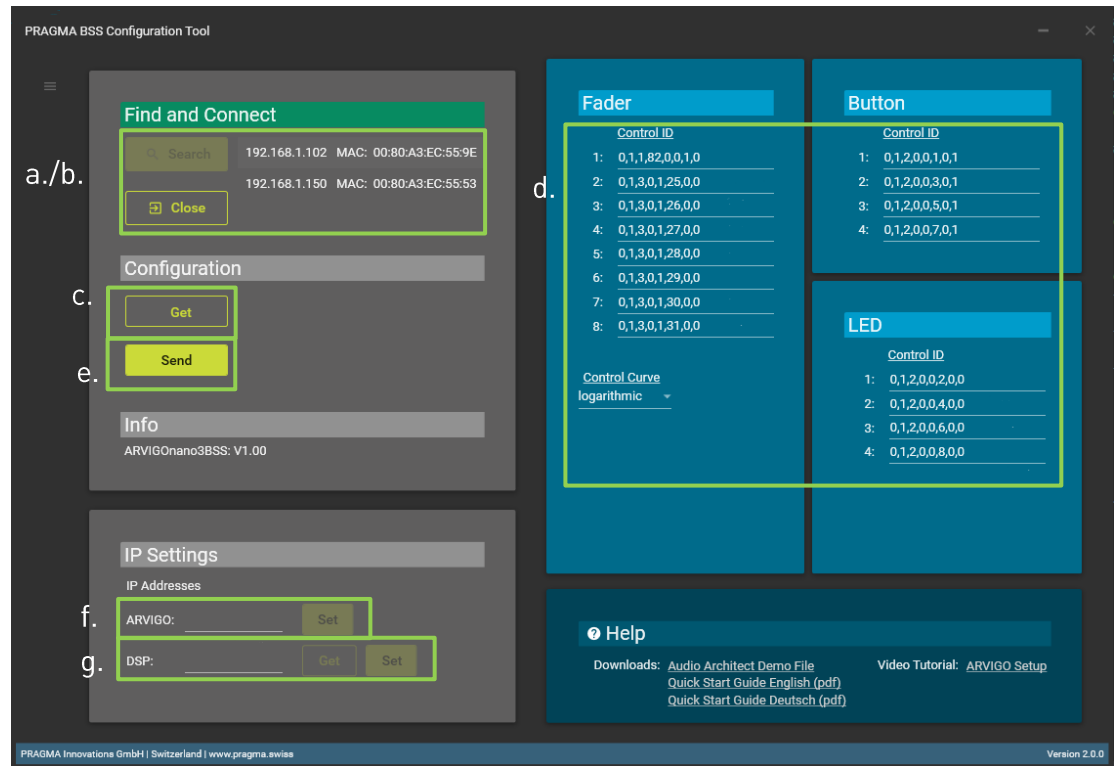
BSS Thrid-Party
controller IDs

Select between
logarithmic and
linear fader curve.

Technical support

1.2 ARVIGOnano configuration

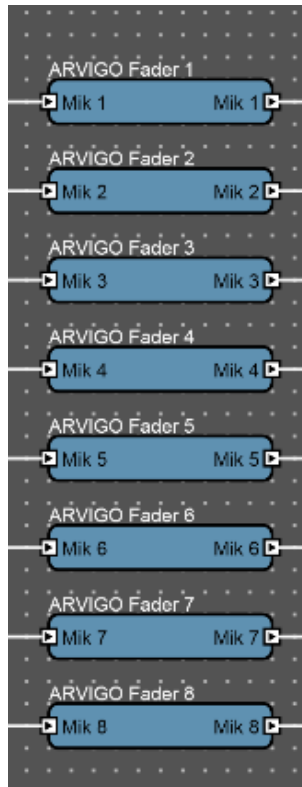
- Click on the **“Search”** button to search your network for connected ARVIGOnano’s.
- Select the desired IP address in the Find-field and connect to the ARVIGOnano by clicking on the **„Open“** button.
- By clicking the **„Get“** button you will retrieve the values saved in the ARVIGOnano (auto get values after connection is established).
Attention: Config Soft only shows the following: Node/Obj-Address and Param ID)
- Define the desired parameters.
(copy/paste 3rd party controller Tab)
- Press **„Send“** in order to save settings in ARVIGOnano.
- Assign new IP address to ARVIGOnano (Default: DHCP).
- Define and retrieve configured IP address of remote DSP.



2 Setup DSP

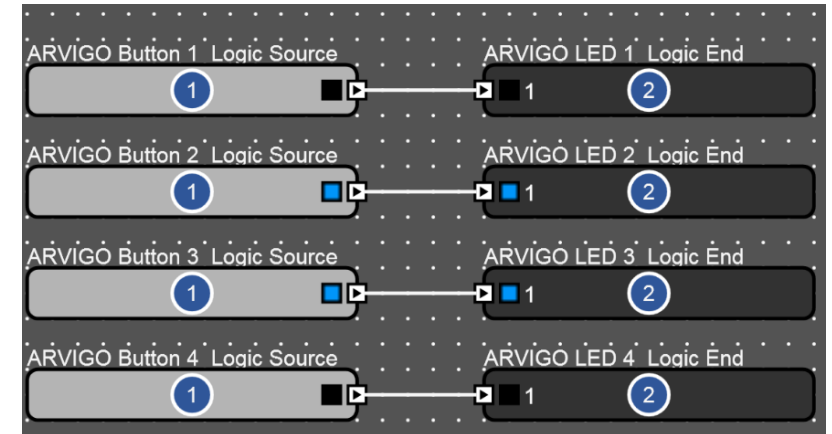
2.1 Audio

Put for each fader a **Gain** block in your Audio Architect design.



2.2 Control

Put for each button a **Logic Source** block and for each button-LED a **Logic End** in your design.



Attention: All blocks must always be in the design, even if they are not used in the application.

3 EC Declaration



EC Declaration of Conformity

PRAGMA Innovations GmbH, as manufacturer having sole responsibility, hereby declares that our delivered version the following described product complies with the applicable provisions of the DIRECTIVES below except as noted herein. Any alterations to the product not agreed upon and directed by PRAGMA Innovations GmbH will invalidate this declaration.

Brand Name: ARVIGO
Product Description: Remote Audio Controls for Networked Audio DSP Platform.
Models: ARVIGOnano, ARVIGOnano R8, ARVIGOnano R12,
ARVIGOnano R16, ARVIGOnano R20

Applicable EC Directives:

- LVD Directive (2006/95/EC)
- EMC Directive (2004/108/EC)
- RoHS Directive (2011/65/EU)

Special Considerations for Product Environment or Compliance:

- Use only PoE Insertion Devices that are CE Marked, certified to local regulations, and appropriately rated Type 1 PoE or Type 2 PoE Plus (IEEE 802.3at).
- Shielded cabling must be used for system connections.

Manufacturer, Location and Contact:

PRAGMA Innovations GmbH
Büchnerstrasse 17
8006 Zürich, Switzerland
info@pragmainnovations.ch